

IRONSTONE

Amphitheatre

Technical Specifications

Venue

Ironstone Vineyards Amphitheatre
1894 Six Mile Road
Murphy's, California

Capacity **6500; Reserved & General Admission seating**

Curfew: 11:00 PM STRICT
Sound Restrictions: 105 db at the mix STRICT

Production Manager

Michael Richter
760-737-3900 Office
619-277-2614 Cell
760-737-3920 Fax
Email: Michael@richtergroup.net

Operations Manager

Michael Zildjian
323-610-0880 Office
323-610-0880 Cell

z@richtergroup.net

Ticketing

Colleen Kennedy
415-793-3672
Email: coleen@labyrinth.com

Settlement

Larry Richter
954-610-8004
Email: larry@richtergroup.net

IRONSTONE

Amphitheatre

Band Production Office

3 phone numbers available for artist use.
(Please contact Michael Richter for numbers)

Wireless high speed internet access is available in the production office

Access

See attached map.

Stage Dimensions

Width 72' (proscenium opening is 45 feet wide)
Depth 33'
Height 4'6" ft
Sound Wings 13' 6" wide x 33' deep (PA can fly)

Rigging Grid

Wood weight bearing grid, 25 feet to the grid off of the deck. Discuss weight capacities with Michael Richter

Barricade

None in house

Mix Position / FOH

24 x 12 concrete pad
(100 feet from the downstage edge of the stage, on the ground, sound and lights go side x side)

IRONSTONE

Amphitheatre

Power

400 amps 3 phase lighting power (**stage left**)
200 amps 3 phase sound/video power (**stage left**)

Loading Dock

Trucks back up to the stage right side of the stage and ramp to the floor

Bus Parking

Bus parking is offstage right. There is no shore power available.

Spotlights

Two Lycian long throw spotlights positioned 150' from stage

Lighting System

Innovative Concert Lighting, Kirk Milton or Mike Lerman
Ph: 661-324-1130, fax: 661-321-9954

Sound System

US Audio, Patrick Coughlin
Ph: 209-327-1996

Video System

The New Trend (TNT) Jim Case
Ph: 800-548-3649

IRONSTONE

Amphitheatre

Dressing Rooms

2 - Dressing rooms furnished with showers, toilets and sinks
(1 of the 2 dressing rooms is a 2-room suite)

Catering

Sound Bites Catering
Tim "Chivo" Call
714-720-8653

Crew

Non Union –Craig "Krash" Gustafson-Crew Chief

Merchandising

Mike Zildjian
209-928-5908

Security

National Event Services Inc. West Christy Feener
Ph: 916-782-9101, fax: 916-782-7202

Hotels

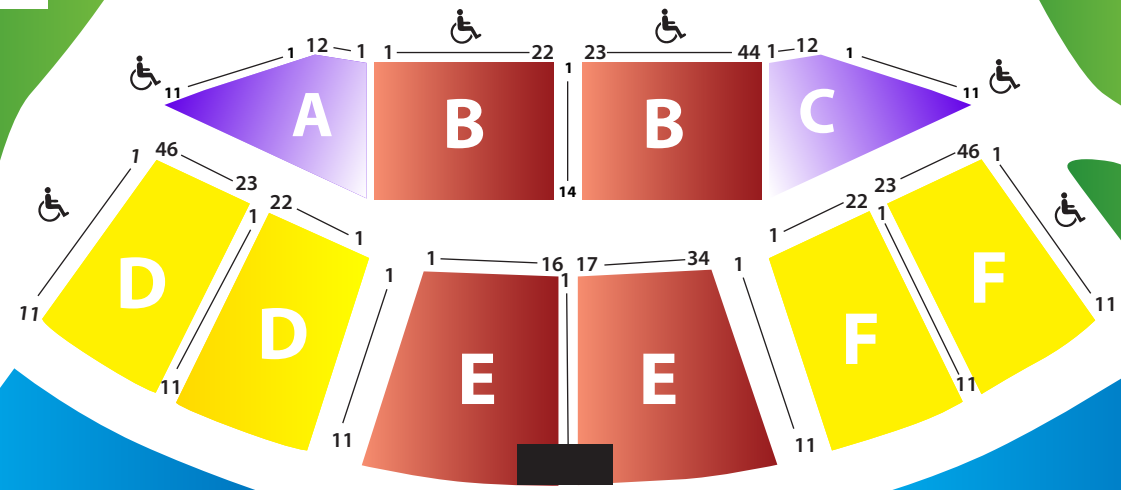
Murphy's Suites, Murphy's Inn, The Angels Inn
Contact Michael McPoland (for all 3 properties)
Ph: 209-728-2121 or motelmike@gmail.com

Soft Goods

1 - 40 x 30 black backdrop hangs off the venue upstage truss (the backdrop is not in house when you supply your own lighting rig)

- P1
- P2
- P3
- P4
- P5
- P6

STAGE



FOOD BEVERAGE & RESTROOMS

GENERAL ADMISSION LAWN

Lawn chairs at concerts must have a seat lower than 12" from the ground, and the back must be lower than 32" from the ground

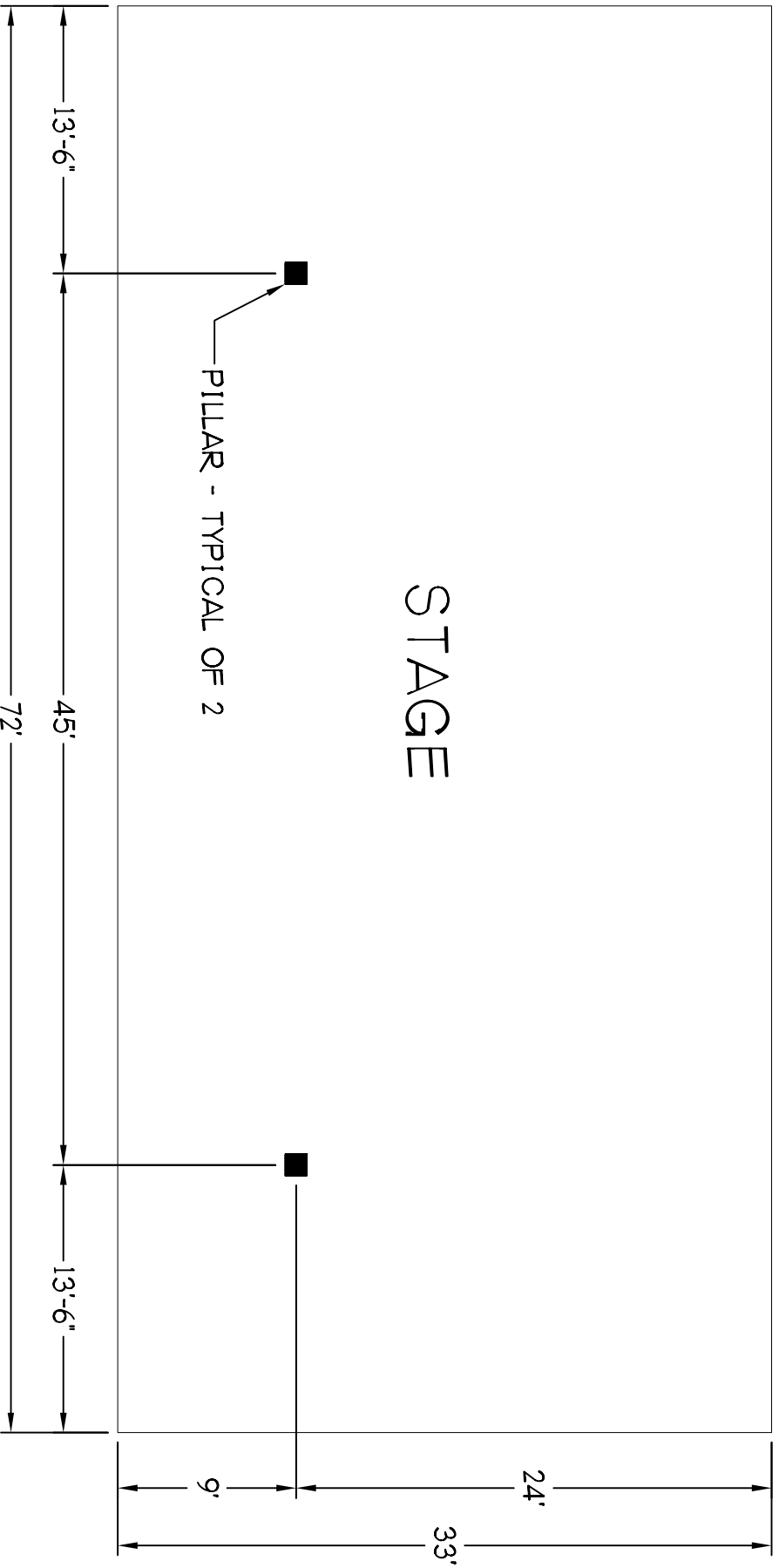
FOOD BEVERAGE & SPONSORS

UPSTAGE

STAGE

PILLAR - TYPICAL OF 2

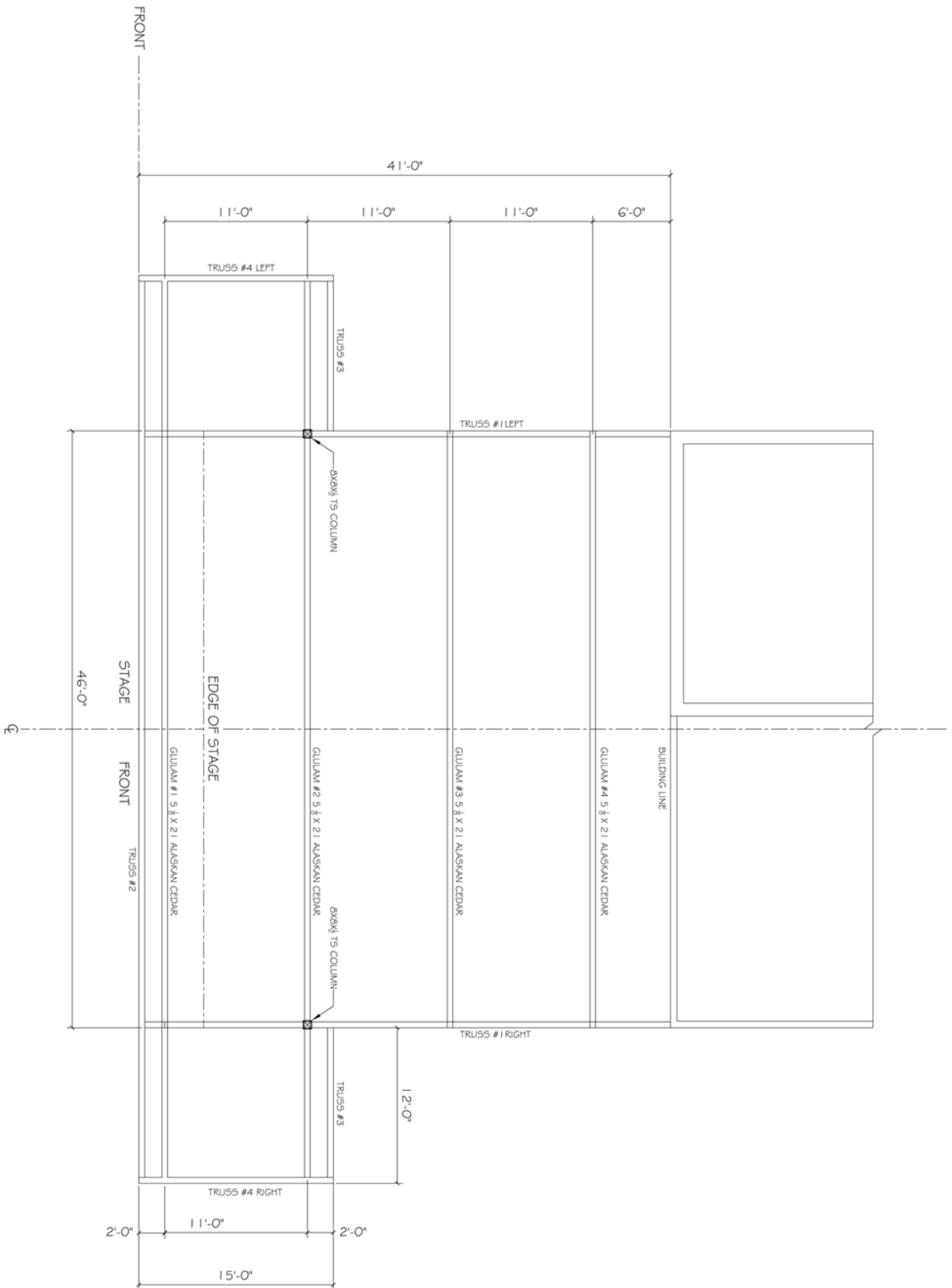
DOWNSTAGE



IRONSTONE AMPHITHEATRE

STAGE LAYOUT

5/31/07



LOAD LOCATION & WEIGHT

IRONSTONE AMPHITHEATER STAGE
SCALE 1/4" = 1'-0"

June 3, 2008

Bruce Rohrer, Director of Operations
Ironstone Vinyards
1894 Six Mile Road
Murphys, CA 95247

Dear Bruce,

This correspondence is a follow up to the on-site inspection performed on Monday, May 19, 2008. The inspection was with regards to the working capacity of the roof framework at the stage facility used for outdoor concerts. The following are my observations, opinions, and analysis of the current load carrying capacities of the various roof components.

OBSERVATIONS

The main roof support system is comprised of three steel reinforced timber trusses and four glue laminated beams, held aloft on two steel columns and steel saddle brackets anchored to the exterior wall of the Conference/Special Events building. Five additional trusses form the front and extended sides of the roof structure, suspended from the first two glue laminated beams. The trusses have been labeled Trusses #1-4 on the included diagram, and the glue laminated beams have been labeled Gluelams #1-4. The associated load capacities for these beams and trusses have also been included in this report.

CONCLUSIONS

The capacity of the glue laminated beams is similar for each of them, and Beams #1 and #2 have additional capacities at the cantilevered portions which protrude beyond the sides of the stage platform. The capacity of each beam is dependant on the position of each load on the beam. The table below summarizes these capacities/locations for use by any venue. In addition, special loading or more complex layouts can be analyzed using our Autocad based diagram and computer generated iterative analysis technique. In this way we can determine maximum loads at specific locations, in complex combinations.

Analysis was based on several factors, including fiber bending and shear strengths for Alaskan Cedar, a maximum limit deflection criteria (for safety and aesthetic concerns), and beam conditions in weathered exterior service.

GLUELAMINATED BEAMS 5.125" X 21" ALASKAN CEDAR

<u>LOAD PATTERN</u>	<u>MAXIMUM LOAD</u>	<u>MAXIMUM LOAD</u>	<u>MAXIMUM LOAD</u>
MIDPOINT	2,000 LBS @ 23'-0"		
THIRD POINTS	1,200 LBS @ 15'-4"	1,200 LBS @30'-8"	
QUARTER POINTS	850 LBS @ 11'-6"	850 LBS @ 23'-0"	850 LBS @ 34'-6"
12' CANTILEVER @ BEAMS #1 & #2	1,000 LBS W/ MIDPOINT LOAD	1,000 LBS W/ THIRD POINT LOADS	1,000 LBS W/ QUARTER POINT LOADS

TRUSSES

The primary trusses, designated Truss #1 on the Load Layout Diagram will each support a maximum load of 2,500 lbs at a distance of 1'-0" from the center of the support column, at the same time the Gluelaminated Beams are loaded.

RECOMMENDATIONS

The above table can be followed for basic load positioning. Should additional load points, or positions other than those noted be desired, additional analysis is required.

Should you have additional questions regarding these observations and conclusions, please contact me.

Respectfully Submitted

Dave Swarbrick
Principal, Swarbrick Civil Engineers

IRONSTONE

Amphitheatre

DRIVING DIRECTIONS TO THE VENUE

Bay Area to Ironstone Vineyards

(approximately 3 to 4 hours)

- Take Interstate 580 to I-205.
- Go East to I-5.
- Go North on I-5 (towards Stockton).
- Go East on Hwy 4 (Cross-town Freeway) to Hwy 99.
- Go South on Hwy 99.
- Hwy 4 continues East a short distance down Hwy 99.
- Go East on Hwy 4 to the stop light in Angels Camp.
- Turn right onto Hwy 49.
- Go South on Hwy 49 to the signal light at Murphys Grade Road and turn left.
- Go East on Murphys Grade Road. to the Murphys Historic Hotel and turn right onto Algiers Street.
- Go to the stop sign at Six Mile Road and turn right.
- Go approximately 1 mile to Ironstone Vineyards on your right.

Yosemite to Ironstone Vineyards

(approximately 2 ½ hours)

- Go West on Hwy 20 to Hwy 49.
- Turn right on Hwy 49 and go to Sonora.
- Go North on Hwy 49 to the Columbia turnoff.
- The turnoff is Parrots Ferry Road: go through Columbia to Hwy 4 in Vallecito.
- Turn right at the stop sign onto Hwy 4.
- Go East on Hwy 4 into Murphys.
- Just past the Chevron is a 4-way stop sign: turn left onto Big Trees Road.
- The next 4-way stop sign is Main Street: go straight.
- The next stop sign is Scott Street: go straight.
- Continue straight ahead: the road becomes Six Mile Road.
- Ironstone Vineyards is approximately 1 mile on the right.

Modesto to Ironstone Vineyards

(approximately 1 hour)

- Take McHenry Ave North through Escalon to Farmington.
- At the stop sign in Farmington turn right onto Hwy 4.
- Take Hwy 4 East to the signal light in Angels Camp and turn right onto Hwy 49.
- Go South on Hwy 49 to the signal light at Murphys Grade Road and turn left.
- Go East on Murphys Grade Road. to the Murphys Historic Hotel and turn right onto Algiers Street.
- Go to the stop sign at Six Mile Road and turn right.

- Go approximately 1 mile to Ironstone Vineyards on your right.

Los Angeles to Ironstone Vineyards

(approximately 6 to 7 hours)

- Take Hwy 99 North to Merced.
- Take J-59 exit (Snelling/La Grange Road.)
- Continue heading North on J-59, which takes you to 120 Jamestown.
- In Jamestown, turn left on Rawhide Rd.
- This will take you to Hwy 49. Turn left onto Hwy 49 and continue into Angels Camp.
- At the stop sign, turn right onto Hwy 4.
- Go East on Hwy 4 to Murphys.
- Just past the Chevron is a 4-way stop sign: turn left onto Big Trees Road.
- The next 4-way stop sign is Main Street: go straight.
- The next stop sign is Scott Street: go straight.
- Continue straight ahead: the road becomes Six Mile Road.
- Ironstone Vineyards is approximately 1 mile on the right.

Lodi to Ironstone Vineyards

(approximately 1 hour)

- Take Kettleman Lane East under Hwy 99 to stop sign.
- Turn left onto Hwy 88.
- Hwy 88 and Hwy 12 come together just before the town of Lockeford.
- Continue East on Hwy 12 to San Andreas. In San Andreas, Hwy 12 becomes Hwy 49.
- Continue South on Hwy 49 to Angels Camp.
- At the signal light at Murphys Grade Road, turn left.
- Go East on Murphys Grade Road to the Murphys Historic Hotel, and turn right onto Algiers Street.
- Go to the stop sign at Six Mile Road and turn right.
- Go approximately 1 mile to Ironstone Vineyards on your right.

Napa Sonoma to Ironstone Vineyards

(approximately 2 to 3 hours)

- Take Hwy 12 West from the Napa and Sonoma area through Suisun and Rio Vista to Lodi.
- Take Kettleman Lane West under Hwy 99 to the stop sign at Hwy 88. Turn left onto Hwy 88.
- Hwy 88 and Hwy 12 come together just before Lockeford.
- Continue East on Hwy 12 to San Andreas. In San Andreas, Hwy 12 becomes Hwy 49.
- Continue South on Hwy 49 into Angels Camp.
- At the signal at Murphys Grade Road, turn left.
- Go East on Murphys Grade Road to the Murphys Historic Hotel, and turn right onto Algiers Street.
- Go to the stop sign at Six Mile Road and turn right.
- Go approximately 1 mile to Ironstone Vineyards on your right.

Sacramento/SAC Airport to Ironstone Vineyards

(approximately 2 to 3 hours)

- From the Airport, take I-5 South, to I-80 East, to Hwy 99 South.
- Take Hwy 99 South to Liberty Road Exit.
- Go East on Liberty Road to Hwy 88.
- Turn right on Hwy 88 and continue to Hwy 12.
- Turn left onto Hwy 12 and go East to San Andreas. In San Andreas Hwy 12 becomes Hwy 49.
- Continue on Hwy 49 into Angels Camp.
- At the signal light at Murphys Grade Road, turn Left.
- Go East on Murphys Grade Road to the Murphys Historic Hotel, and turn right onto Algiers Street.
- At the stop sign make a right onto Six Mile Road.
- Go approximately 1 mile to Ironstone Vineyards on your right.

San Jose to Ironstone Vineyards

(approximately 3 hours)

- Take 880 Oakland, to 680 South, to 580 East, to 205 East, to 120 East Sonora/Manteca.
- Take Hwy 99 North, to Hwy 4, to Angels Camp.
- Stay on Hwy 4 approximately 1 hour.
- Make a right turn onto Hwy 49 into Angels Camp.
- At the signal light, make a left onto Murphys Grade Road.
- Go East on Murphys Grade Road to the Murphys Historic Hotel, and turn right onto Algiers Street.
- At the stop sign make a right onto Six Mile Road.
- Go approximately 1 mile to Ironstone Vineyards on your right.

IRONSTONE

Amphitheatre
FORTY-FIVE, CAL.

